



Normeca ^{AS}

SUPPLIER OF MOBILE HOSPITALS

Mailandvn 12, P.O. Box 404, 1470 Lorenskog _ Norway

Tlf.: +47 67 92 76 00 - Fax: +47 67 92 76 92

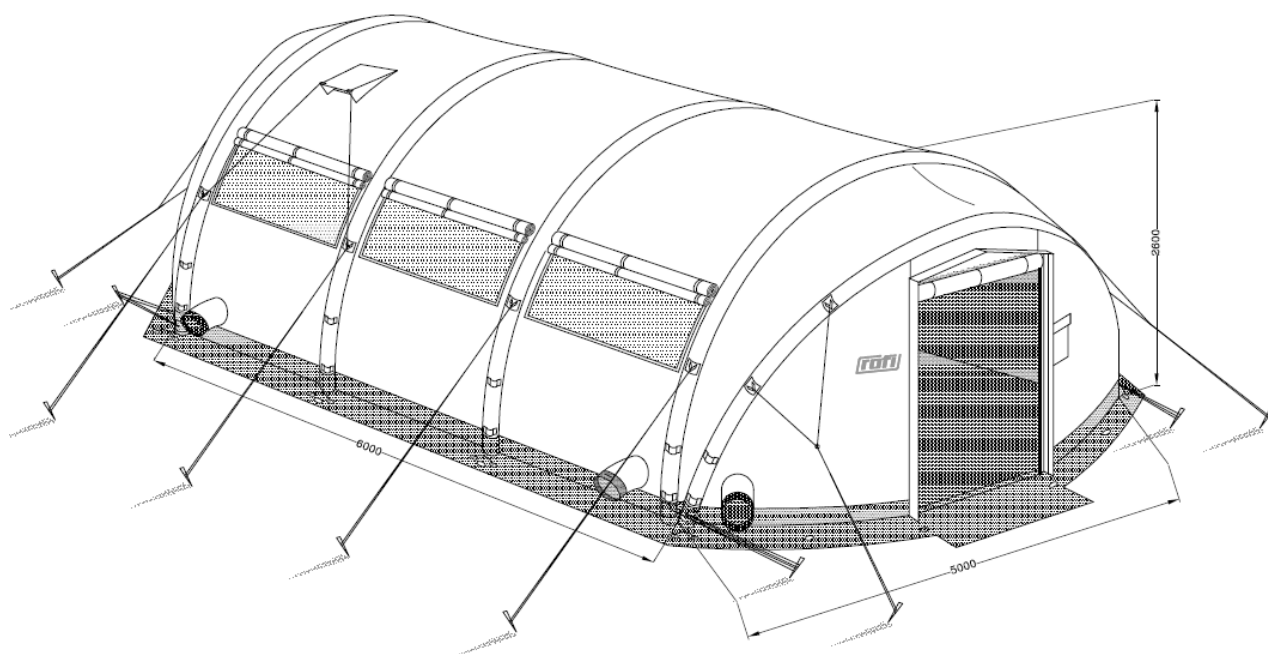
Mail: post@normeca.no - Web: www.normeca.no

Assembly Instructions

RAPID BASIC

RAPID PLUS

RAPID ADVANCED



Article number:
RAPID Basic

72010980-00
72010980-15
72011360-12
72011230-12

RAPID Plus

72011270-15
72011290-15
72011320-15
72011280-00

RAPID Advanced

72010960-15
72011260-15
72010876
72011222-15
72011370-00
72011340-00

1.	Content.....	3
2.	Placement of the tent	3
3.	Preparation for setting up the tent.....	4
4.	Assembly of hose-connections.....	4
5.	Inflating the tent	4
6.	Assembly of distance poles	6
7.	Mounting the pegs and ropes	6
8.	Tensioning / Adjustments	7
9.	End Connector for connecting Entrance Section.....	7
10.	Option: Connecting Entrance Section to tent (only by RAPID Advanced)	8
11.	Option: Connecting Gable (only by RAPID Advanced).....	9
12.	Striking / Disassembly	11
13.	Packing.....	12

**WARNING!**

**The tent must not be erected in heavy wind conditions.
The tent should not be erected if wind speed is more than 22 m/s or with
wind gusts of more than 26 m/s.**

**The tensioning ropes must be adjusted every day. In windy conditions, the
ropes must be maintained minimum 3 times a day.**

**Perform daily maintenance, by securing all pegs and ropes so that they are
properly placed and adjusted, and that the tent fabric appears tight and
smooth.**

**The tent is designed for use in areas without snow.
If snow is expected, the tent should be equipped with a flysheet to prevent
snow from covering the outer fabric.**

1. Content

RAPID Basic, Plus & Advanced 6 M

Content:
Tent with integrated floor and air tubes
9 ea Distance poles and repair kit
16 ea Pegs 40 cm
12 ea Pegs 50 cm
1 ea Hammer

RAPID Advanced 12 M

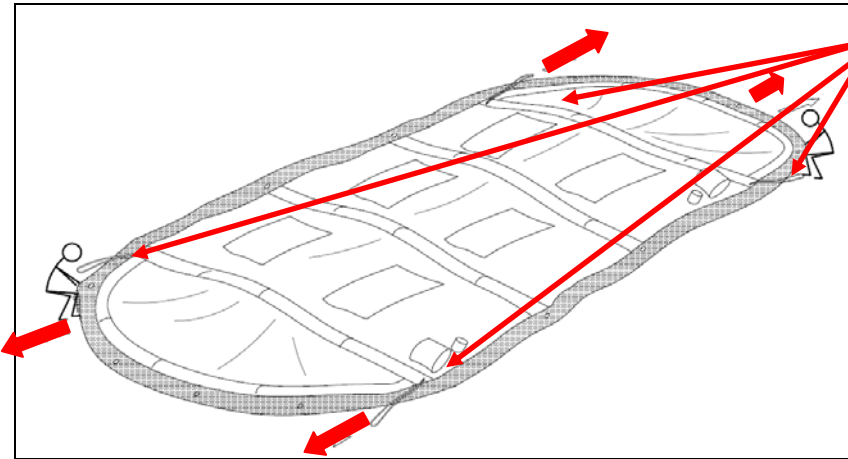
Content:
Tent with integrated floor and air tubes
18 ea Distance poles and repair kit
24 ea Pegs 40 cm
50 ea Pegs 50 cm
1 ea Hammer

2. Placement of the tent

Before starting the assembly:

- Make the decision regarding placement and orientation of the tent.
- It is recommended that the tent is placed on gravel surface to achieve best possible drainage.
- The ground should be smooth and have possibilities for adequate grip for the pegs.
- Place the tent so you prevent water from entering underneath the floor or through the openings. If the tent is to be used in humid climate, a drainage ditch should be dogged around the outside of the tent.
- It is also recommended to place a tarpaulin or similar on the ground to avoid the tent getting dirty during assembly of the tent.

3. Preparation for setting up the tent



Secure the tent to the ground with 4 pegs (40 cm), 2 each on the short side of the tent.



WARNING!

Stretch out the fabric

Make sure that the fabric is stretched out and the floor is smooth/flat. If not, the inflatable hose may suffer a bend with the result of no air pressure to the end hoses.

Figure 1: Stretch out the fabric

4. Assembly of hose-connections

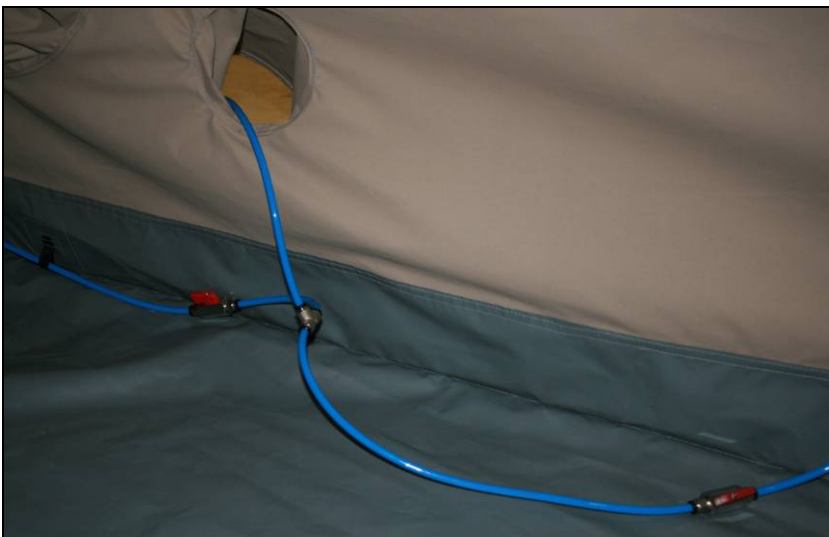


Figure 2: Hose inside of the tent

Inside the tent

The connectors at the air tube are foreseen with closable valves. If the hose is **not connected**, these valves will be closed, preventing the air to escape from the air tubes.

Outside the tent

The connector at the hose is foreseen with check valves, allowing controlling the air tube separately. When the hose is connected, the valves will be opened, allowing the air to flow in and out of the air beams.

5. Inflating the tent

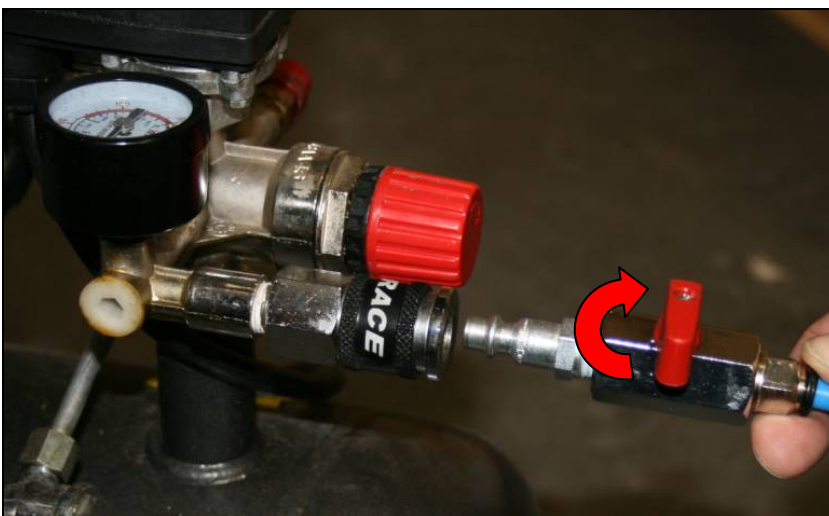
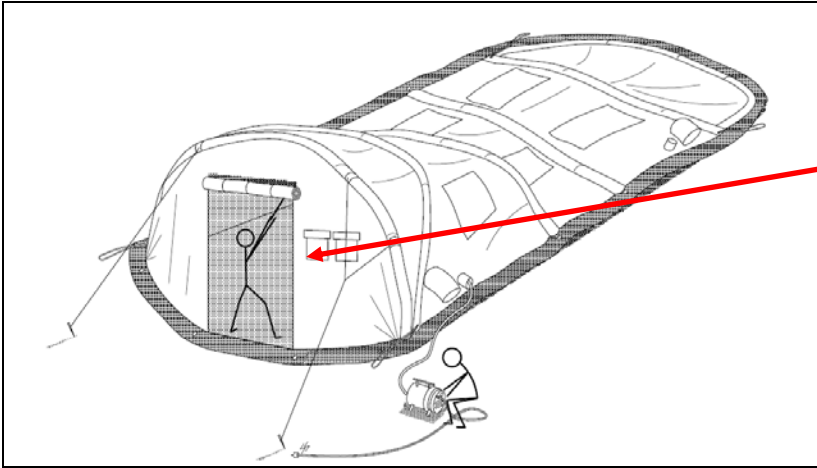


Figure 3: Connect to compressor and open ball valve

Connect to compressor and open the ball valve

The hose shall be connected to the compressor unit. When the hose is properly connected, and the circuit is sealed, turn the ball-valve into open position. Start the compressor.

**Support the tent during inflation**

By inflating the air tubes, it is important to stretch out the fabric and help the tubes to rise. During inflation place 2 pegs (50 cm) with ropes on the short side.

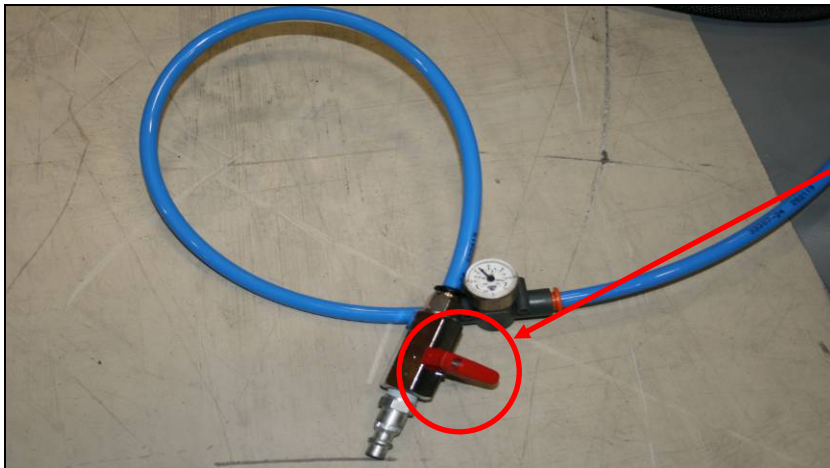
Avoid (as much as possible) sharp bending of the air tubes and also creating stress to fabrics or other components on the tent.

Figure 4: Support the tent during inflation

**Inflate air until the manometer shows a pressure of 6 bars.**

The compressor has a maximum pressure capacity level at 8.0 bars. Normally the compressor has a regulator valve installed, which is preset to stop at a pressure at 6.0 bar, and will shut off when this pressure is reached.

Figure 5: Manometer - 6 bar

**Closed ball valve**

Before disconnecting the hose from the compressor, make sure that the ball-valve on the hose is closed. If this valve is in open position by disassembling the hose from the compressor, the air will leak out from the air beams.

Figure 6: Closed ball valve

6. Assembly of distance poles



Figure 7: Distance poles with cup

We offer two different types of distance poles:

Alternative 1, with cup:

Place the distance poles inside the tent. Tread the splints through the cups. The poles are adjustable and are to be stretched out as far as possible.

These poles function as stabilization of the tent lengthwise, and also for hanging up lights and equipment inside the tent.

7. Mounting the pegs and ropes

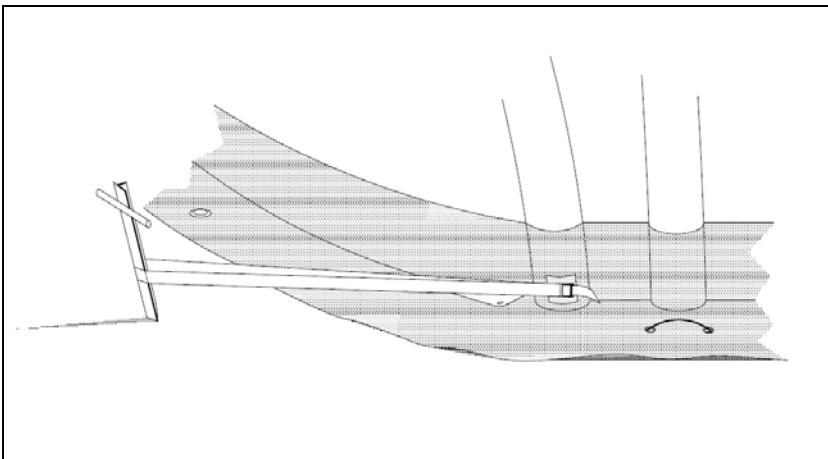


Figure 8: Place the pegs

Place the pegs

Stretch out the tent in longitudinal direction and secure first of all the 4 pegs (40 cm) with straps in the corners and afterwards the 8 remaining pegs around the tent.

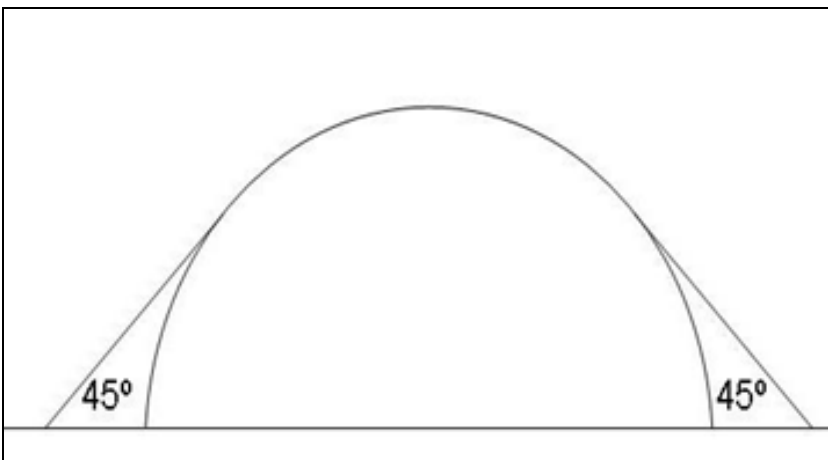
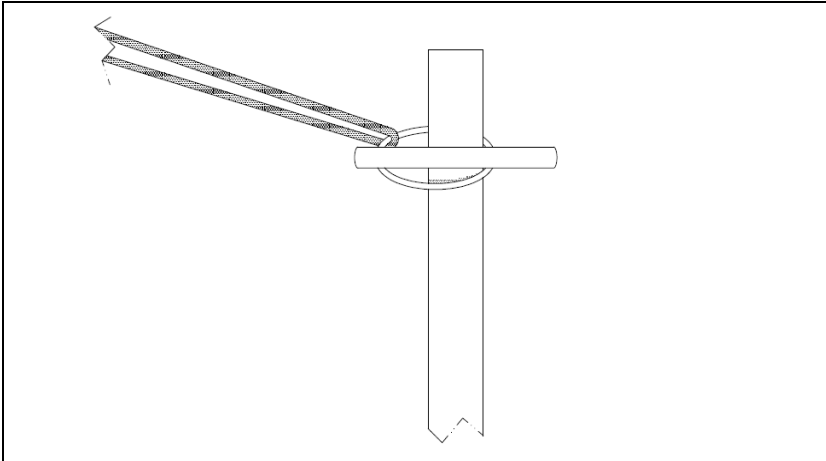


Figure 9: Placing the pegs for the ropes

Placing the pegs for the ropes

Place the pegs as far away from the tent wall as convenient. We recommend an angle of the ropes on approx to 45 °.

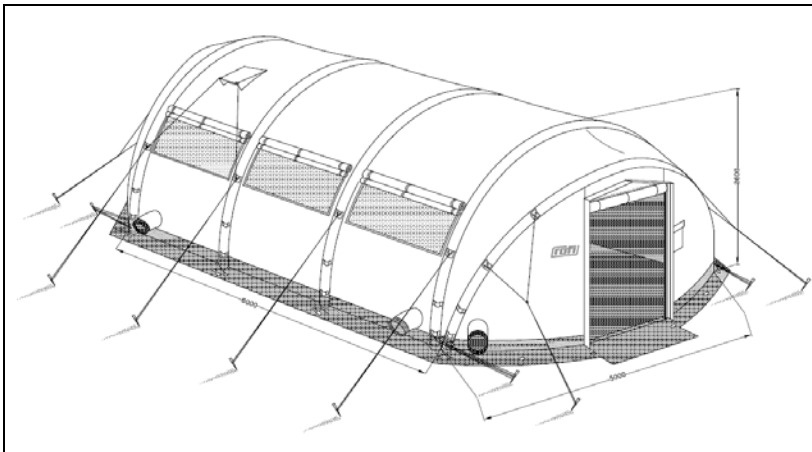


Pegs with O-ring and rope

The pegs must be hammered all the way down, so the horizontal part of the peg secures the tent to the ground. Adjust the strap accordingly. Note: The pegs shall be hammered into the ground, so the horizontal part of the peg (crossbar) secures the O-ring to the ground.

Figure 10: Peg with O-ring and rope

8. Tensioning / Adjustments



Adjusting straps and ropes

After setting up and securing the tent, the straps and ropes should be adjusted and tensioned to make the tent appear as smooth and tight as possible.

Place sandbags or similar items of stability on the mud flap to maintain stability when the tent is erected.

Figure 11: Adjusting straps and ropes

9. End Connector for connecting Entrance Section



By connecting two tents - entrance section to entrance section - use the end connector that is located in a pocket inside the tent.

Figure 12: End Connector Inside



Use the zipper on each side of the end connector to connect the entrance sections.

Figure 13: Zip the end connector to the entrance section

10. Option: Connecting Entrance Section to tent (only by RAPID Advanced)

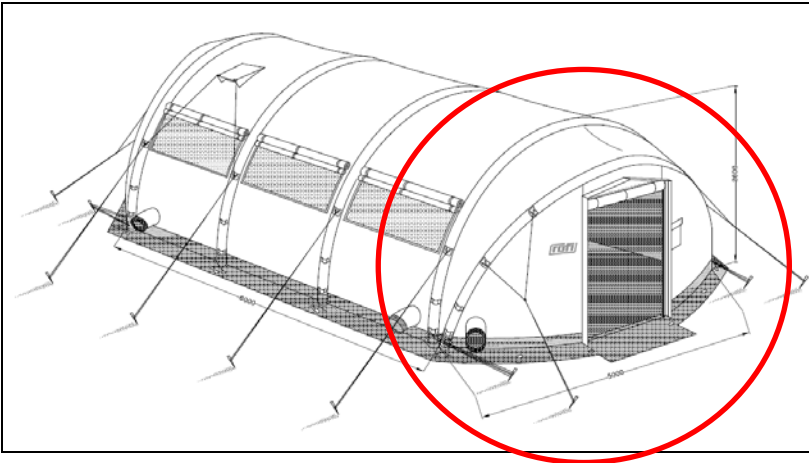
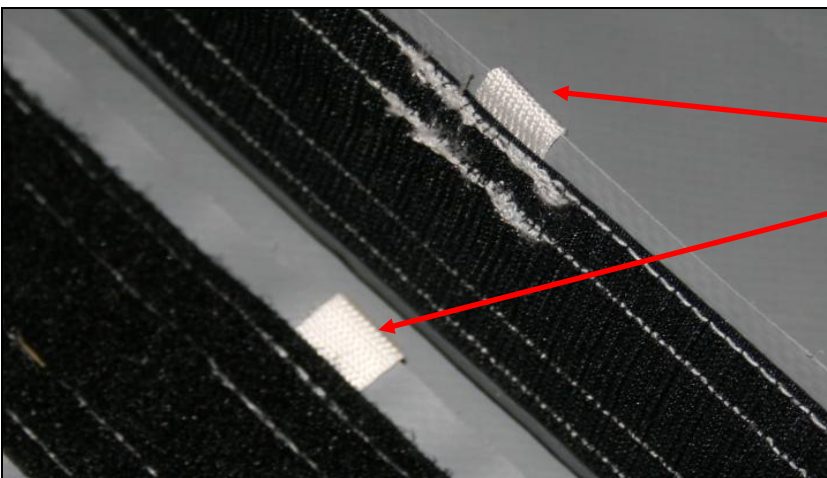


Figure 14: Connecting entrance section



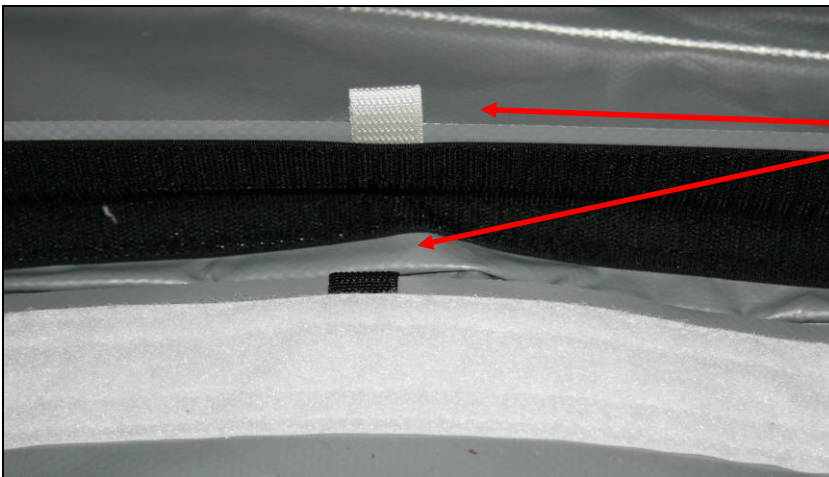
By connecting the entrance section on RAPID Advanced make sure to start in the middle where the Velcro is marked with white dots. Seal the Velcro strips along the entrance section.

Figure 15: Connecting entrance section

11. Option: Connecting Gable (only by RAPID Advanced)

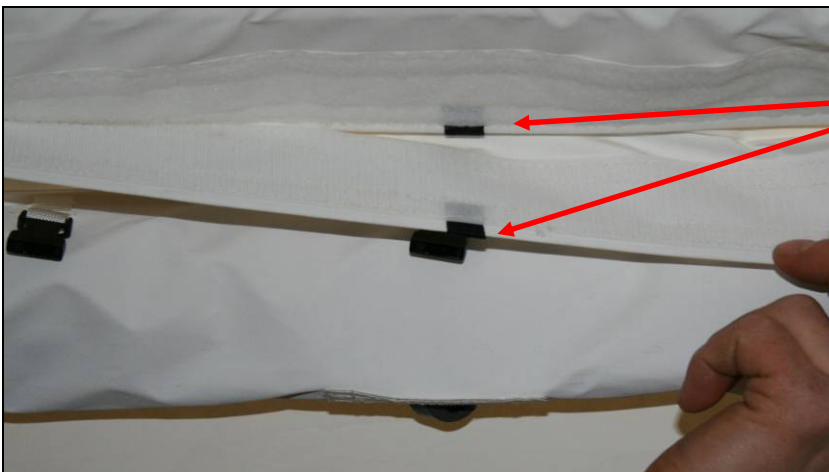


Figure 16: Connecting gable to gable



Floor: By connecting two tents make sure to start in the middle of the floor where the Velcro is marked with white and black dots. Seal the Velcro strips along the floor.

Figure 17: Connecting floor



Roof: Start in the middle of the roof where the Velcro is marked with black dots. Seal the Velcro strips along the roof.

Figure 18: Connecting roof



Seal the Velcro strips along the side.

Figure 19: Connecting tent



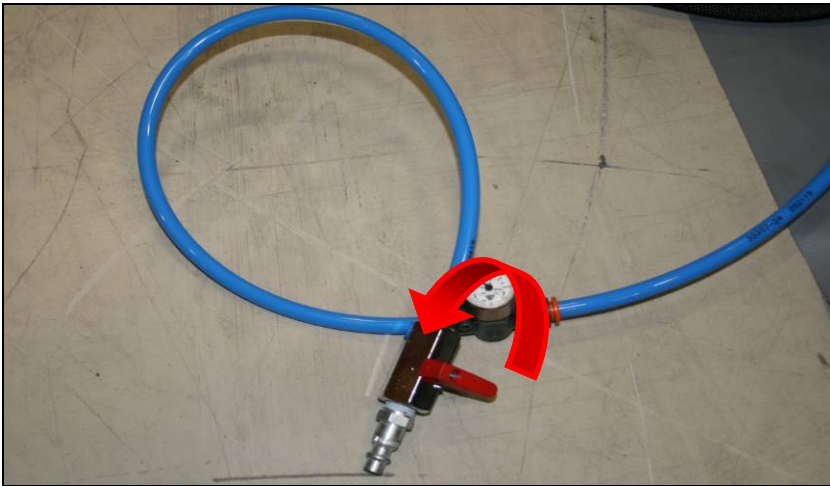
Fulfil the closing of the tent connection by finally shutting the Velcro outside of the tent.

Figure 20: Connecting tent

12. Striking / Disassembly

Before you disassembly the tent:

- Remove all commodities from inside of the tent, and carry out proper cleaning.
- Remove and place the pegs in enclosed PVC-bag.
- Close all windows, vents and door-zippers (except one door-opening).
- Remove the distance poles from inside of the tent, and place them in the corresponding bag.
- Make sure that all hose connectors are connected to the respective air tubes.
- Be aware that the tent is dry before striking!



Open the valve

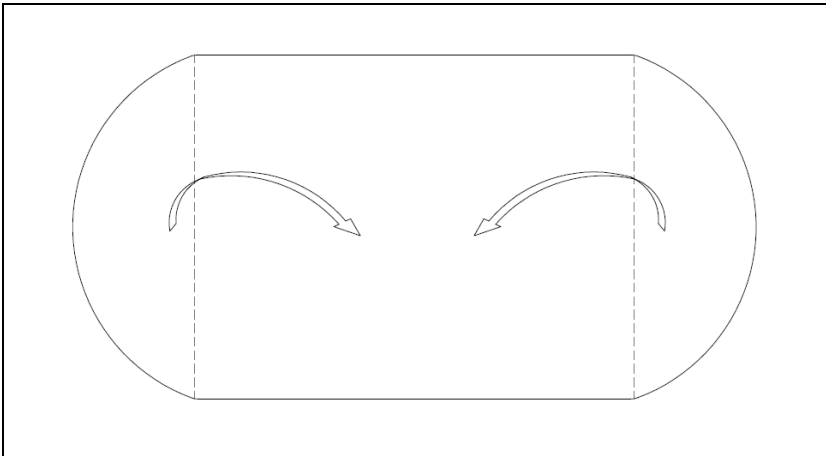
Make sure that all the air beams are properly connected to the circuit, and that the air is released from all the pressurized air beams.

Carefully open the valve, letting the air pressure slowly out of the entire circuit.

Note: Be aware of the dangers in connection with the release of air pressure.

Figure 21: Open the valve, carefully

13. Packing



Fold the entrance sections towards the centre

When the air tubes are empty, stretch out the tent fabric and make it as flat as possible.

Note: Make sure that all the air is out of the air tubes before starting to fold the tent.

Fold the entrance sections towards the centre of the tent, from the short sides of the tent.

Figure 22: Fold the entrance sections towards the centre

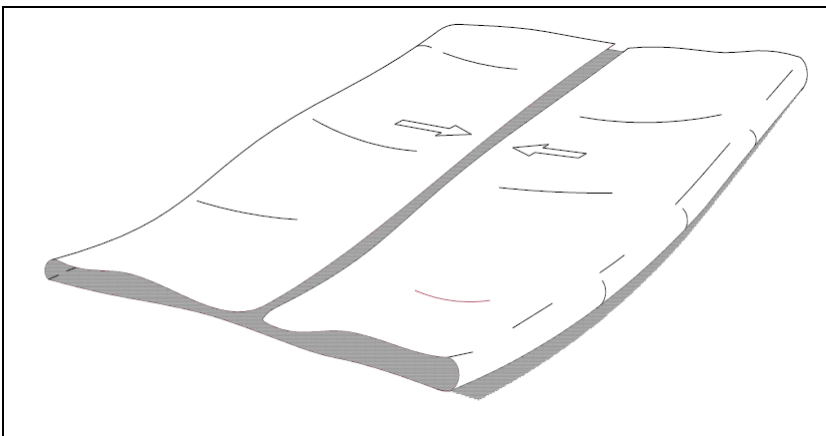


Figure 23: Fold the long sides towards the middle

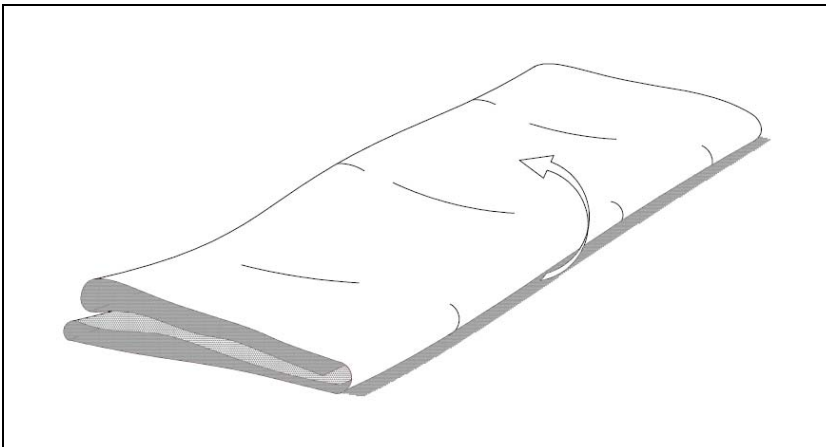
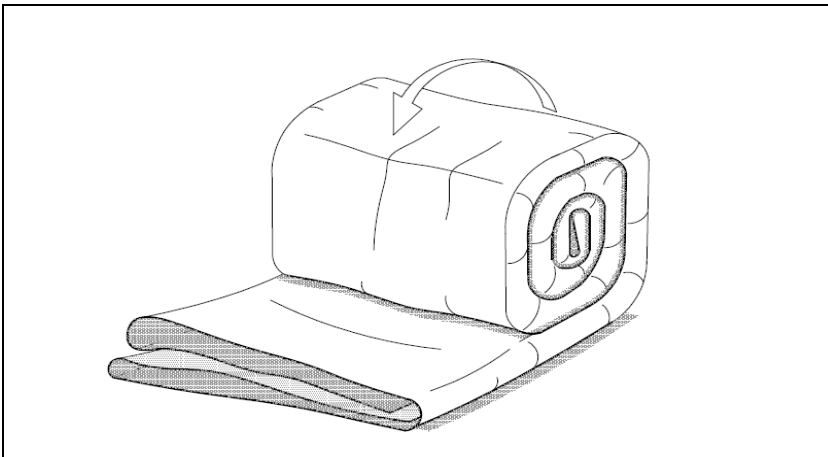


Figure 24: Fold double



Roll/fold

Roll the tent, and place it on top of the enclosed cover (Figure 10/11).

Figure 25: Roll/fold

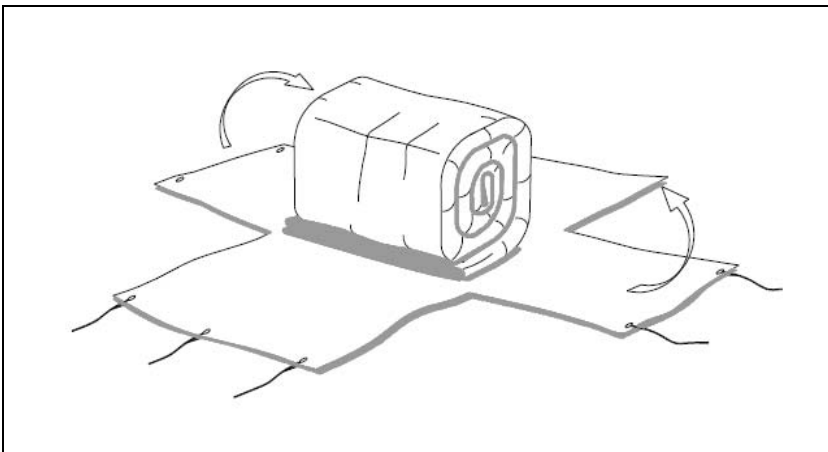


Figure 26: Place the tent on the cover

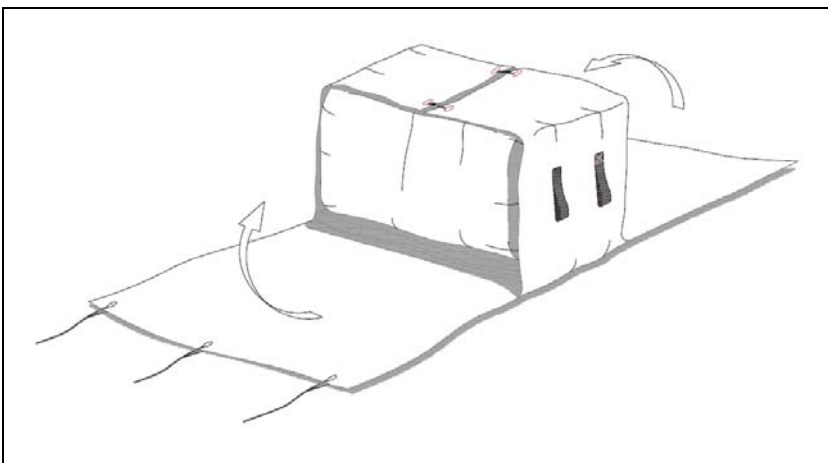


Figure 27: Cover

ROFI RAPID TENT ACCESSORIES



Flysheet

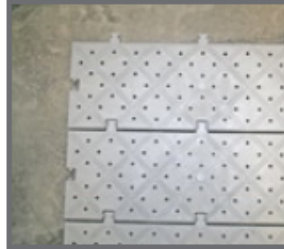


Compressor

ROFI FIELD EQUIPMENT



ROFI AC/Heaters



ROFI Floor



ROFI Folding chair/table



ROFI Lighting



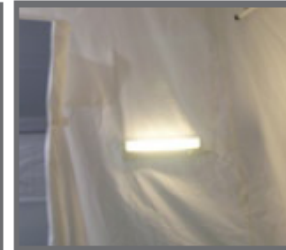
ROFI Lighting



ROFI Camp light



ROFI Camp light



ROFI Cabin light



ROFI Field bed



ROFI Disco bed



ROFI Toilet/Shower tent



Water heater



Normeca^{AS}

SUPPLIER OF MOBILE HOSPITALS

Mailandvn 12, P.O. Box 404, 1470 Lorenskog _ Norway

Tlf.: +47 67 92 76 00 - Fax: +47 67 92 76 92

Mail: post@normeca.no - Web: www.normeca.no